

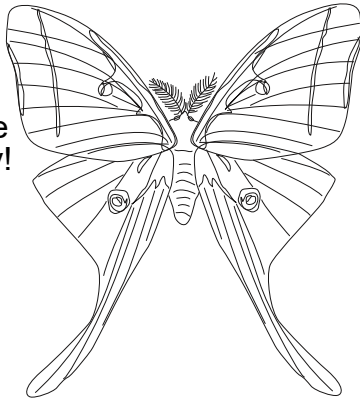
Butterfly vs. Moth: Do you see the difference?

Lesson Four
Activity Sheet 2



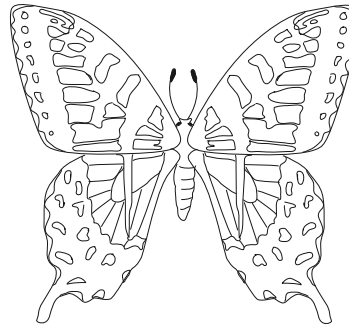
Identify each insect by writing butterfly or moth under each picture.

Moths are active at night and have earthy colors to camouflage them while they sleep during the day!

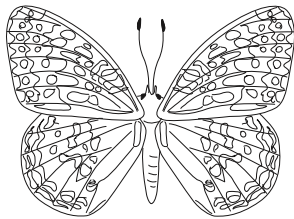


Moth

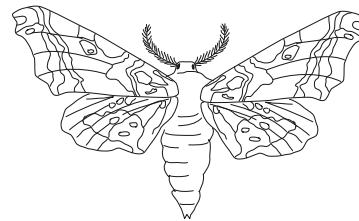
Most butterflies have club-shaped antennae or antennae with knobs on the end while a moth's antennae are feather-like or taper to a point



Butterfly

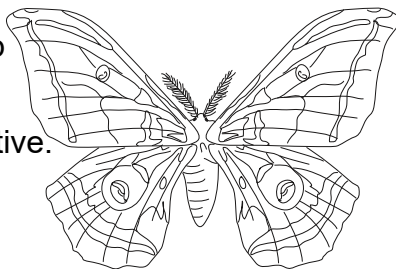


Butterfly

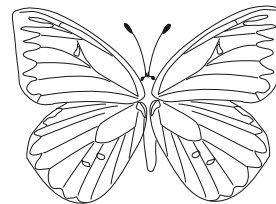


Moth

Moths have a thicker coating of scales than butterflies, giving them a furry appearance. These heavy scales help keep them from losing heat during the night when they are most active.



Moth



Butterfly
