



## Southern Green Stink Bug *Nezara viridula*



### Hosts:

- Beans, tomato, peas, cabbage, crucifers, cucurbits, macadamia nut, mango, orchids, citrus, pepper, potato, soybean, corn, rice, peach, cotton, etc.

### Size:

- 12-17mm length, 8mm width

### Adults:

- Green body
- Small black dots along sides of abdomen
- Short broad scent gland on underside of abdomen



### Nymphs: 5 Instars

- Early instars are mostly black with some red coloration and white spots
- later instars become green and yellow with black coloration and red spots



### Eggs:



## Green Stink Bug *Chinavia hilaris*



### Hosts:

- Tomato, apricot, beans, pear, cherry, corn, apple, asparagus, cotton, eggplant, peach, peas, soybean, tobacco, etc.

### Size:

- 14-17mm length, 8mm width

### Adults:

- Green body
- Occasionally, sides of abdomen and head have light green/yellow border
- long curved scent gland on underside of abdomen



### Nymphs: 5 Instars

- Early instars are mostly black with some red coloration and horizontal white stripes
- later instars become green and yellow with black and red coloration at the pronotum



### Eggs:



## Red Shouldered Stink Bug *Thyanta custator*



### Hosts:

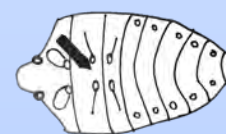
- Tomato, corn, soybean, peach, alfalfa, sorghum, wheat, beans, other legumes, etc.

### Size:

- 10-11mm length, 5-7mm width

### Adults:

- Green, matte body
- Band across pronotum ranging from deep purple to red, sometimes band is not present
- Red coloration sometimes present along edges of abdomen
- No spine on underside of abdomen



### Nymphs: 5 Instars

- Early instars are mostly black with some red and white coloration
- later instars become black at the pronotum with white horizontal stripes and red spots



### Eggs:



## Red Banded Stink Bug *Piezodorus guildinii*



### Hosts:

- Pea, alfalfa, soybean, bean, hairy indigo, lentils and other legumes

### Size:

- 8-11mm length, 4-6mm width

### Adults:

- Green, glossy body
- Band across pronotum ranging from deep purple to red to orange to cream
- Red coloration sometimes present along edges of abdomen
- long spine on underside of abdomen



### Nymphs: 5 Instars

- Early instars are black at the pronotum and mostly red on the abdomen
- later instars become more green with black and red longitudinal stripes



### Eggs:

