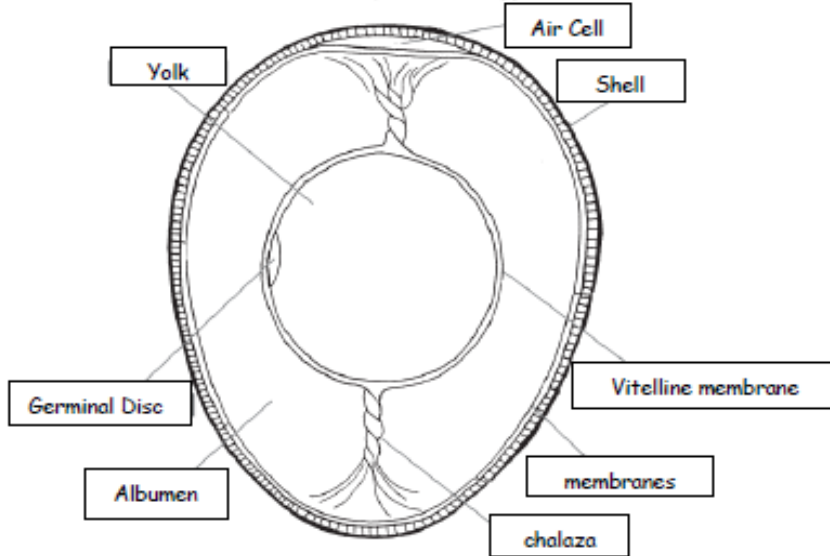


**4-H Embryology in the Classroom Project**  
**Worksheet Two Answer Key: Identify Parts of the Egg**

**Egg Parts**

Color each part of the egg a different color and label each part of the egg.



Use each word only once:

air cell  
 germinal disc  
 vitelline membrane

albumen or white  
 membranes  
 yolk

chalaza  
 shell

