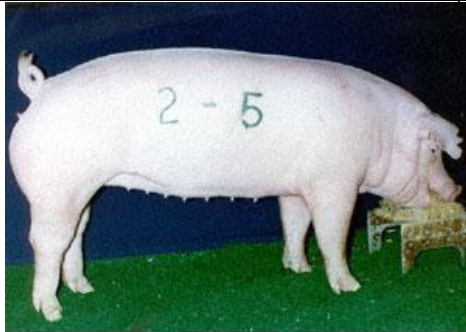


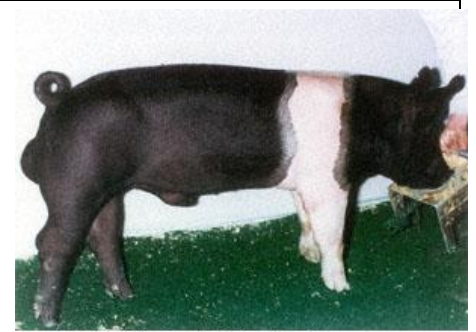
# Breeds of Hogs



provided by National Swine Registry



provided by National Swine Registry

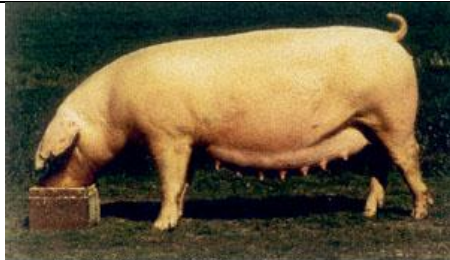


provided by National Swine Registry

**CHESTER WHITE** - this breed was developed in Pennsylvania. These animals have white bodies and medium-sized, droopy ears. They are also good mothers.

**DUROC** - this American breed came from crosses between red hogs in New York and red hogs in New Jersey. These animals have light red to dark red bodies and droopy ears. They grow quickly and efficiently.

**HAMPSHIRE** - developed in England, these animals have black bodies with a white belt around the shoulders and both front legs. They also have erect ears and heavy muscles.



provided by National Swine Registry

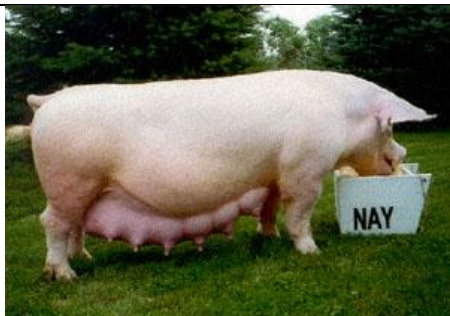


provided by National Swine Registry

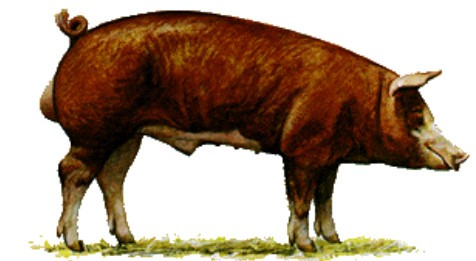
**LANDRACE** - coming from Denmark, these animals have very long, white bodies and very large floppy ears. They are good mothers.

**POLAND CHINA** - the members of this Ohio breed have black bodies with six white points. The white points are their four legs, tail, and nose. They also have droopy ears. These animals are lean with heavy muscles.

**SPOTTED** - developed in Indiana, these animals are medium-sized. They have black and white spotted bodies and droopy ears. Also, they gain weight easily and are aggressive breeders.



provided by National Swine Registry



**YORKSHIRE** - coming from England, these animals have long, large-framed, white bodies with erect ears. They are known as the "mother" breed because they produce large litters and are good mothers.

**BERKSHIRE** - this breed came from England. These animals have black bodies with white feet, tails, and faces. They also have sound skeletons; dish snouts; and short, erect ears.

**HEREFORD** - this breed was developed in America, these animals have a white face, red body, with at least two white feet. They should have a medium length face with a slight dish, drooping ears, loose jowls and a long neck.

# FEED ID



## Corn

Most extensively produced feed grain  
 Most widely used and best energy feed  
 High in starch but low in protein and fiber  
 Very palatable  
 Notoriously low in Lysine  
 The primary grain fed to all swine and poultry as well as finishing cattle and sheep on feed



## Soybean

Rarely fed to livestock in whole form but can be if heated first to deactivate the antinutritional factors (trypsin inhibitor)  
 Can provide a valuable protein and energy source Soybeans are usually fed as soybean meal  
 Whole soybeans are usually fed to increase energy density of diet



## Oat

Widely grown  
 Bulky and palatable  
 Higher protein than most grains  
 Usually rolled, crimped or ground for feeding  
 Used extensively in horses Also used for some cattle and sheep, particularly show animals  
 Lower energy density than corn and wheat  
 Excellent for young animals starting on feed



## Pellet

Pelleting is the process of forcing a ground, moist forage through a die and compressing it, then cutting at certain lengths. These can vary in length and diameter.

There are several advantages to pelleting a roughage, including: easier to store and handle, less bulky, reduces dusts, can allow for automatic feeding, reduces selectivity by animals.



## Cube

Cubing is the process of compressing cut hay into small square cubes.

There are several advantages to cubing a roughage, including: easier to store and handle, eliminates dust, can allow for automatic feeding, reduces selectivity by animals, can also be used with roughage/concentrate mixture



## Ground

Grinding is a mechanical process which reduces particle size through use of a hammer mill, but can vary greatly due to screen size, power and type of grain.

# SWINE TERMS – Junior & Senior

1. **Barrow:** a male hog castrated at an early age.
2. **Boar:** a male hog of any age.
3. **Carcass:** dressed body of a meat animal, with the insides removed (offal).
4. **Castrate:** to remove the testicles from a male hog.
5. **Condition:** degree of fatness in meat animals.
6. **Conformation:** refers to shape and design of body.
7. **Crossbred:** mating of purebred hog but of different breeds.
8. **Farrow:** to give birth.
9. **Gestation:** period during pregnancy, 114 days.
10. **Gilt:** a young female hog which has not farrowed.
11. **Registered:** purebred animal whose pedigree is recorded with the breed registry.
12. **Runts:** small, undersized or weak pigs in a litter.
13. **Sow:** a mature female hog.
14. **Wean:** to remove the young from its mother.
15. **Sire :** father
16. **Dam:** mother.
17. **Cull:** animal taken out of the herd because below herd standards.
18. **Dry sow:** sow whose pigs have been weaned, not in milk or lactating.
19. **Bred sow/gilt:** a female hog that is pregnant.
20. **Ration:** total feed given during 24 hours (1 day).
21. **Scours :** diarrhea or loose running manure.
22. **Shrinkage:** weight lost during hauling or other handling processes.
23. **Stag:** a male hog castrated at an older age.
24. **Weaner pig:** a newly weaned pig.
25. **Feeder hog:** a young hog usually weighing 60-189 lbs.
26. **Market hog:** a hog for slaughter weighing 190-240 lbs.
27. **Notching:** notching the ears for identification - pig number and pig litter number.
28. **Needle teeth:** sharp needle- like teeth found in baby pigs ( removed at birth).
29. **Replacement:** gilt kept for breeding. Should have 12 to 14 sound teats and weigh 225- 275 lbs. at 6 to 8 months of age.
30. **Concentrate:** feedstuff that is high in energy and low in fiber (grains).
31. **Roughage:** feedstuff that is high in fiber and low in energy (hay).