



Columbia Connections

UF/IFAS Extension Columbia County

Edited by: J. M. Capasso

Introduction

Spring is in the air! This means corn planting and watermelon season is underway. Many farmers planted their fields late this year due to the rainy weather at the end February. Columbia County's watermelon producers experienced a close call with frost Easter weekend, but emerged with mostly limited damage. Peanut planting season and the hot days of summer are just around the corner!

UF/IFAS Columbia County is excited to be offering tax assistance, conducting multiple on-farm trials, and a master gardener plant sale (April 10th 9am-2pm).

In this month's newsletter, we have included articles from our Extension Agents. The topics include Pesticide Continuing Education Unit (CEU) opportunities, the role luck plays in our lives, April planting dates for edible plants, and practices to prevent cattle theft.

Please reach out to us at (386) 752 5384 if we can be of any assistance.

- Jay Capasso

Contents

Articles

Introduction	1
Pesticide CEU Opportunities	2
Is it Really about Luck?	3
April Planting Dates	4
Master Gardener Plant Sale	5
Can we Prevent Cattle Rustling?	6

Agents contributing to this newsletter are all UF/IFAS Extension Columbia County employees and their specialties are listed, along with their email addresses and phone extension numbers below. You can call us anytime at **386-752-5384**.

Heather Janney, hfutch@ufl.edu
County Extension Director,
4-H Youth Development

Paulette Tomlinson, ext. 1503, apt@ufl.edu
Livestock, Forages & Natural Resources

Jay Capasso, ext. 1511, jcapasso@ufl.edu
Agriculture & Row Crops

Halie Corbitt, ext. 1501, hcorbitt@ufl.edu
Family & Consumer Sciences

Erin Harlow, ext. 1502, eeeck@ufl.edu
Horticulture & Master Gardener
Coordinator



Pesticide Continued Education Units (CEU) Opportunities

Jay Capasso
Row Crop Agent
jcapasso@ufl.edu

Online Pesticide CEU Opportunities:

To renew a Private Pesticide Applicator license, applicators must earn 4 CORE category Continued Education Units (CEUs) and Private category CEU's every 4 years. Over the past year, it has been difficult to obtain CEUs from in-person meetings due to COVID-19. UF/IFAS Columbia County Extension has already began to offer in person meetings again, however, there are still opportunities for applicators to earn pesticide CEUs online. The links below contain online CEU options that generally require applicators to watch a video or read an article then answer questions related to the topic of the video/article.

Through these online options, applicators can obtain all the required 4 CORE pesticide CEUs to renew their Private Pesticide Applicator License for free! The Private Pesticide CEUs are more difficult to obtain online. In the future, in-person programs will provide opportunities for producers to earn both CORE and Private CEUs. The UF/IFAS Pesticide Information Office also offers online opportunities to earn pesticide CEUs with a \$20 charge per CEU.

Free Online Pesticide CEU's:

Southwest Florida Vegetable Growers' Meetings:

Recordings of previous Southwest Florida vegetable growers' meetings from Fall and winter 2020 and 2021 can be found at <https://sfyl.ifas.ufl.edu/hendry/commercial-vegetable-production/> you can earn CEU's by watching the videos and completing pre and post-tests.

Florida Citrus Industry Magazine:

<https://citrusindustry.net/ceu/>

Growing Produce Website:

<https://www.growingproduce.com/crop-protection/ceu-series/>

\$20 Pesticide CEU's:

UF/IFAS Pesticide Information Office:

<https://ifas-pest.catalog.instructure.com/>

If you are having trouble obtaining your pesticide CEUs please reach out to us at (386)752-5384 and we will do what we can to help!

Is it Really About Luck?

Heather Janney
 County Extension Director/4H Youth Development Agent
 &
 Jay Capasso
 Row Crop Agent



In my whole life, I have never found a four-leaf clover. Until now. Last week, I found one. Today, two more. So, is luck really something that is that hard to find? Do we really have to spend our days struggling to find that pot of gold at the end of the rainbow?

It is the little things in our world that can be considered lucky. When you are an agricultural producer, you depend on the luck of having good weather that provides the right temperature and amount of rain. You really must find those small, truly lucky, moments: Finding a dollar bill, getting a great parking space, winning a drawing-Those are things based on pure luck. They randomly happen because of your attention or well, you could say, fate's choosing. Nothing you do can control the outcomes involved in these things.

Then there are those big things that we think are based on luck – winning an award, catching a large fish, or getting a promotion. Are these things really luck? No, they happen because of hard work and determination.

We must remember that not everything in our lives is based on pure luck. For example, agricultural producers utilizing the right technology, practices, and resources can increase their yields and income. Simple practices such as calibrating farm equipment or adjusting planters may save farmers money or increase their yields.

Resources such as the services/educational opportunities available through UF/IFAS Extension, loans and grants available through USDA programs, or agricultural cost share through the Suwannee River Water Management District/Florida Department of Agriculture and Consumer Services can help farmers reach their goals. While luck may seem to play a factor in agriculture, it is also effort, dedication, and education that goes into having a successful operation. UF/IFAS Columbia County Extension is here to help bring a little luck to your farm.

We must make sure to take those little and lucky moments, into consideration though. If we take a moment to just breathe and realize the small positive things in our day, we keep a positive outlook. Positivity is what can give you the courage and resilience to achieve those big things and to conquer those huge goals. If you still choose to associate your big achievements with luck then it is because you've done great things to influence your luck. Those days that you think you are having the worst luck, ask yourself, is it really about luck?




As an old Irish blessing would say... May luck be on your side. Just remember, you do not need luck when you have the motivation to achieve it all!

April Planting Dates + the Master Gardener Plant Sale

Erin Harlow
 Horticulture Agent
eeeck@ufl.edu

EDIBLES TO PLANT IN *April*



	North	Central	South
 Easily Survives Transplanting	Boniato, Gingers, Roselle, Tomatillo, Tomatoes	Boniato, Chinese Cabbage, Gingers, Roselle, Sugarcane, Swiss Chard, Tropical Spinaches	Boniato, Chinese Cabbage, Gingers, Roselle, Sugarcane, Tropical Spinaches
 Transplant Carefully	Amaranth, Calabaza, Long Squash, Luffa, Papaya, Passionfruit, Seminole Pumpkin, Sweet Potatoes	Amaranth, Calabaza, Long Squash, Luffa, Papaya, Passionfruit, Pigeon Pea, Pineapple, Seminole Pumpkin, Sweet Potatoes, Yucca	Amaranth, Papaya, Passionfruit, Pineapple, Sweet Potatoes, Yucca
 Use Seeds	Beans (bush, lima, pole), Cantaloupes, Chayote, Corn, Cucumbers, Okra, Peanuts, Peas (southern), Squashes, Watermelon	Beans (bush, pole), Chayote, Corn, Okra, Peanuts, Peas (southern), Squash	Beans (bush, lima, pole), Chayote, Peas (southern)



For more information, please visit GardeningSolutions.ifas.ufl.edu

Master Gardener Plant Sale

A FUNDRAISING EVENT
PROCEEDS SUPPORT OUR
EDUCATIONAL PROGRAMS, FUTURE
DEMONSTRATION GARDENS AND
GREEHOUSE

UF IFAS Extension
UNIVERSITY of FLORIDA



Houseplants
Pollinator Plants
Landscape Plants
Fruits and Berries
Vegetables

Next to the
West Branch Library

UF/IFAS Extension Office
Columbia County
437 NW Hall of Fame Dr
Lake City, FL 32055

APRIL 10, 2021

9 AM - 2 PM

Cash & Check Accepted



Can We Prevent Cattle Rustling?

Paulette Tomlinson
Livestock, Forages & Natural Resources Agent
apt@ufl.edu

Florida Agricultural Crimes Investigative Unit (FACIU) released an announcement this week that a cattle theft occurred between March 12th and March 15th in Suwannee County. Somewhere between 70 to 75 head of mostly black cattle were taken from a ranch northwest of Live Oak. Of that number between 30 -35 were black yearlings weighing between 500-700 pounds.

WOW! Prices are not the greatest right now but losing any animal, for any reason, cuts into your pocket and I can't imagine this kind of a loss. To make matters worse, if it could be, it is unfortunate that none of the animals were tagged, branded or had any defining marks to distinguish them from any other black cattle!



Is this the same bull in both pictures?

Photo credit: UF/IFAS Tomlinson

I know ear tags are a more common way for identification in today's world but even a tag costs money and time to you as a rancher. I don't believe any of us ever think about needing to identify our animals today because of rustling activity. We know identifying them helps us with our own record keeping and herd management decisions but not because we fear someone stealing our animals! Who could do that and seemingly so easily?

But I am not here to discuss that I am here to offer some education and ask for your help. The first part is identifying your animals. I know cattle we are dealing with larger numbers so tagging can be expensive, but the benefits can also be large! If your animals are identified, you will be able to know which cows calved at the least and at the most maintain multiple year records on her productivity. Another reason for identification has to do with the potential theft of animals or something more common, your animals find themselves in your neighbor's pasture! Bad

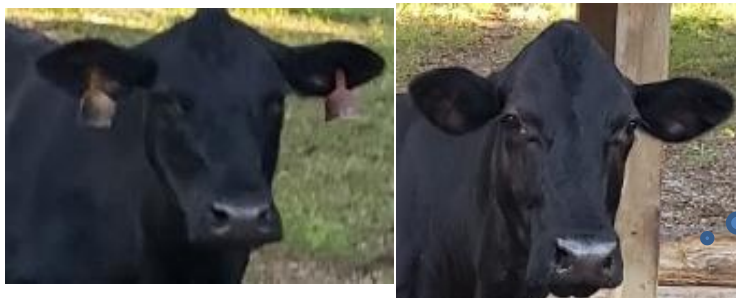


Photo credit: UF/IFAS Tomlinson

She has 2!
I just need one

fences or a bull just decides he likes the looks of the other field, either way a tag or brand or ear marks can help with reclaiming your animal. One more benefit is in the case of a hurricane or other severe weather event, animals may leave their home pasture and a tag is at least one way to help distinguish your animals from someone else's. There are multiple

ways to identify your animals, some can cost you money when you sell them because of hide damage. But identifying your animals in some manner and being able to distinguish yours from others should be a priority.

Finally, is how you can help with the theft of animals or other criminal behavior. If you see something, say something! This goes for all kinds of things. An example from I believe the early '90s happened in the Midwest! A corn farmer noticed someone at the end of a neighbor's field close to the road. He thought the fellow was having car trouble and started towards him on his tractor. He then realized the fellow had a shovel and went back to his vehicle and left in a hurry. The farmer called the sheriff just to be on the safe side and low and behold it turned out the guy was stealing seed. Genetically improved seed, patented seed was being stolen for what turned out to be another country, so it was basically a spy! GO figure in the corn fields of our Midwest that happened. It would never have come to light if the farmer had not said something and passed it off as a "weird or strange" event.

So if you see something that is out of the ordinary, contact local law enforcement and let them know! And if you have any information about the cattle theft in Suwannee County please contact Kin Weaver, lead investigator 386-590-6893 reference number SCSO21CAD005278. For more information about animal identification and the benefits of record keeping <https://edis.ifas.ufl.edu/an172>.